

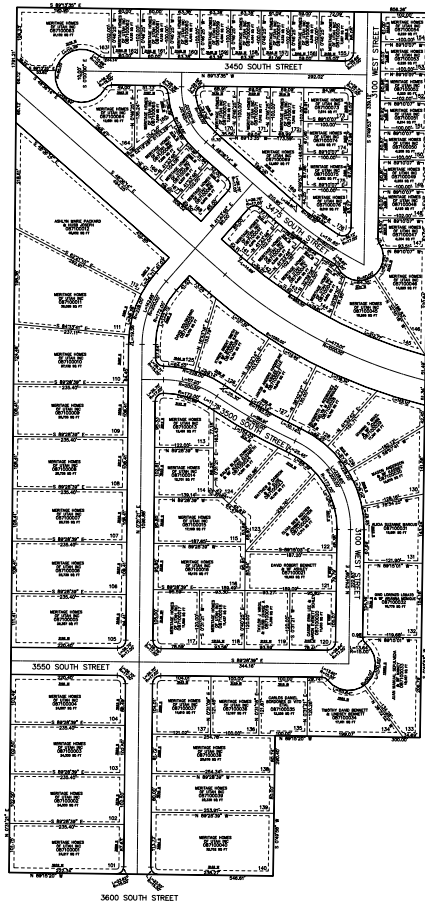
PART OF THE NW. 1/4, OF SECTION 3, T.5N., R.2W., S.L.B. & M.  
WESTWOOD ESTATES SUBDIVISION PHASE 1

IN WEST HAVEN CITY

SCALE 1" = 200'

TAXING UNIT: 291

SEE PAGE 29-2



SEE PAGE 29-2

SEE PAGE 29-2

10' UTILITY & DRAINAGE EASEMENTS EACH  
SIDE OF PROPERTY LINES AS INDICATED  
BY DASHED LINES EXCEPT AS OTHERWISE  
SHOWN.

SEE PAGE 29-2

FOR COMPLETE SURVEY DATA SEE  
ORIGINAL DEDICATION PLAT IN  
BOOK 96, PAGE 84-85 OF RECORDS.

\*HARVEY APPROPRIATE CLOSING, TOWN, 190000